

**Thermo Scientific LabLink xL**  
Quality Assurance Software

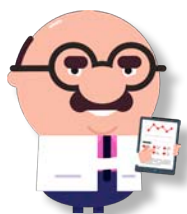
## Simplify your **Quality Control**

- Real-Time Peer Comparison Software
- Daily QC Integration for Thermo Scientific MAS and Other QC Manufacturers
- Simple and Intuitive Interface
- Automated QC Data Transfer

*simpler***QC**

**Thermo**  
SCIENTIFIC

# About LabLink xL



Monitor your internal quality control while comparing results with other labs around the globe in real-time with Thermo Scientific™ LabLink xL™ cloud-based quality assurance software.



## Truly Real-Time Peer Comparison Software

Peer data is updated instantly



## Daily QC Integration for MAS and Other QC Products

All your QC products are in one place



## Simple and Intuitive Interface

Interactive Levey-Jennings charts, Westgard rules, and audit-friendly reports



## Automated QC Data Transfer

With select systems



## Cloud-Based

SSL encrypted. Automatically receive future updates



## No Submission Cutoff Dates

Review data whenever you want



## Sigma Score and Other Performance Metrics

%Bias, SDI, CVI, Z score, and more



## Multiple Lab Management

Scalable software grows with your organization



## Validated Software

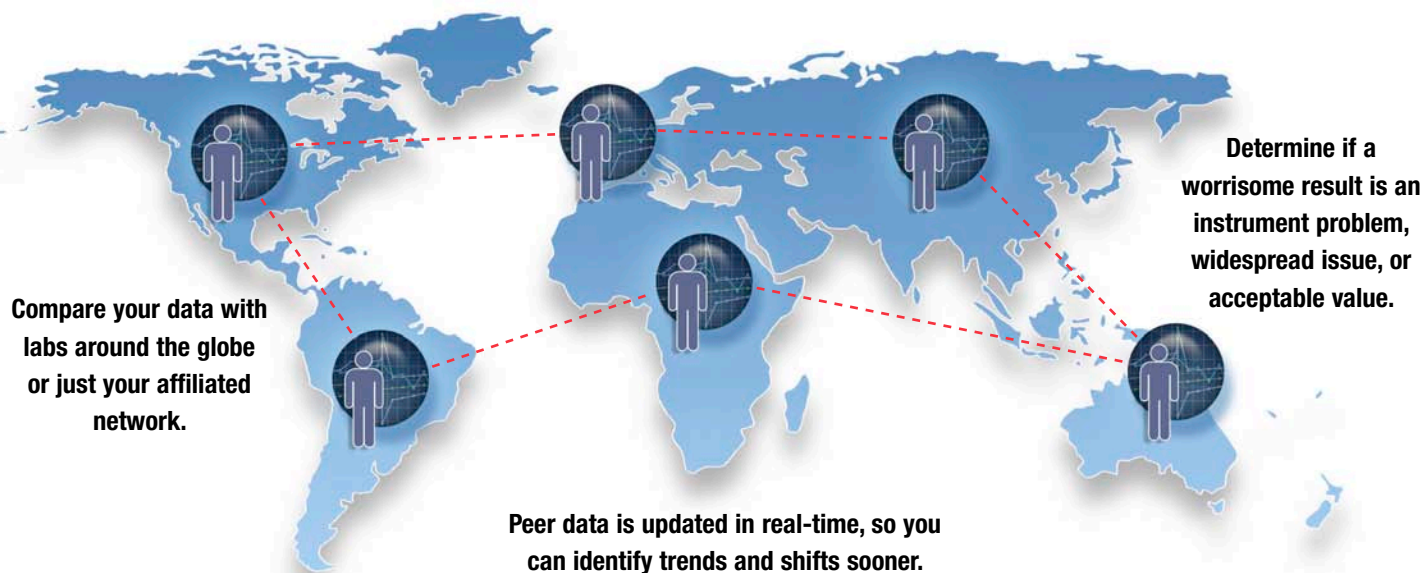
FDA and GAMP 5 compliance



## Multilingual Capabilities

Available in 15+ languages

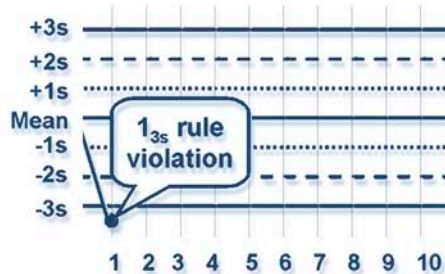
## Troubleshoot faster with real-time peer comparison



## Day-to-day QC all in one place



Levey-Jennings Charts



Westgard Sigma Rules

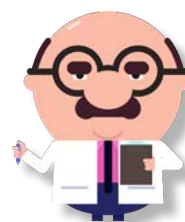
- Perform all your daily QC activities inside LabLink xL with interactive charts and graphs.
- Compare Levey-Jennings charts for multiple instruments.
- Select Westgard and RiliBÄK violation rules.
- Flag and comment on individual data points.

## Use with MAS products

or any other QC manufacturer\*



\* Non-MAS products are supported by our autoconnectivity and Daily QC features such as report generation, Levey-Jennings charts, Westgard rules, multiple lab management, and affiliated lab comparison. Peer Data for non-MAS Products is not available at this time.





## Audit-friendly reports

Visualize data the way you want

- Easy-to-read reports help you monitor individual lab performance by shift, day and month
- View peer data alongside your laboratory data

### Internal Performance

Comparison ✓

Levey-Jennings ✓

QC Summary ✓

### Errors and Exceptions

Affiliated Exception Notes

Exception Notes

### Peer Data Comparison

Affiliated Lab ✓

Condensed Interlab

Drugs of Abuse ✓

Individual Lab

Instrument Interlab

Method Performance ✓

Monthly Summary

Statistical Summary ✓

Summary Urinalysis

Youden ✓

### Audit History

Audit ✓

Point Data Submission ✓

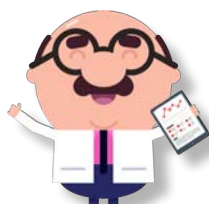
Summary Data Submission ✓

### Region Specific

Rilibak Data Summary ✓

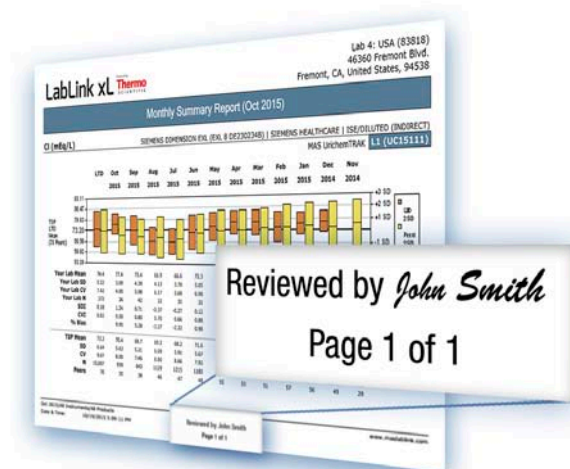
Rilibak ✓

✓ NEW IN LABLINK XL 2.0



### Signature Verification and Email Delivery

- Review and digitally sign reports (authorized users only)
- Schedule reports to be automatically delivered to your inbox every month



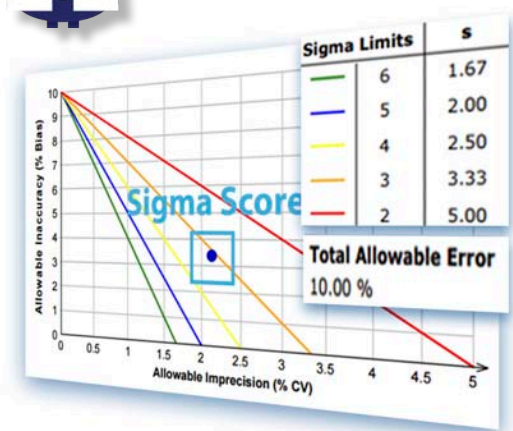




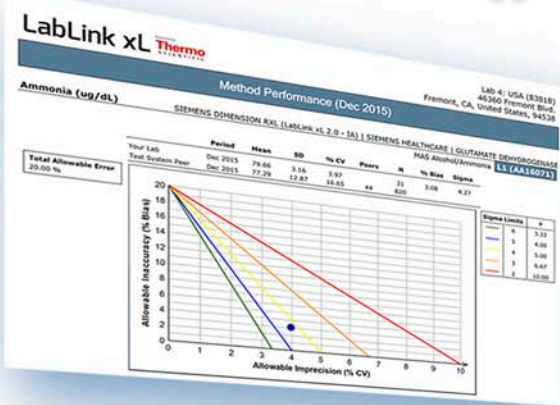
## Performance metrics including Sigma Score



- **%Bias** – Percent difference between your observed test results and your lab's target mean.
- **Coefficient of Variation (CVI)** – Compares your lab's CV to your target CV to evaluate precision with respect to your chosen target.
- **Standard Deviation Index (SDI)** – Compares your lab's mean to your target mean to evaluate accuracy with respect to your chosen target.
- **Sigma** – Indicates how much your data varies from the total allowable error limit by calculating the number of standard deviations in a given test system that fit within your chosen quality goals.
- **Z Score** – Measures how many standard deviations away an individual QC result is from the target mean.

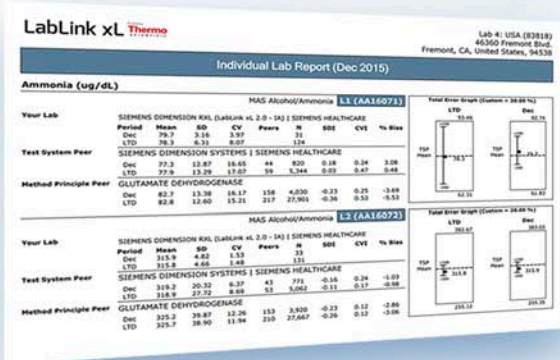


# Popular reports



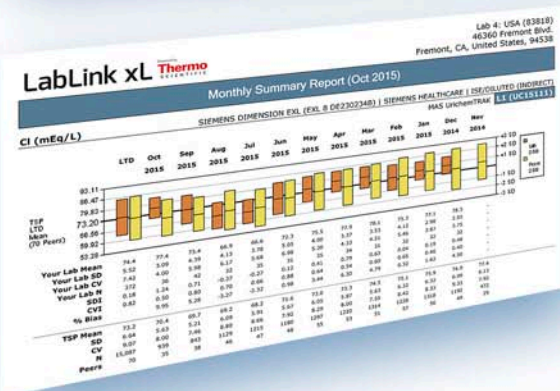
## Method Performance and Sigma Score

- See which instruments are performing the best for a particular method and test.
- Choose between CLIA quality goals or custom goals for total allowable error.



## Individual Lab Report

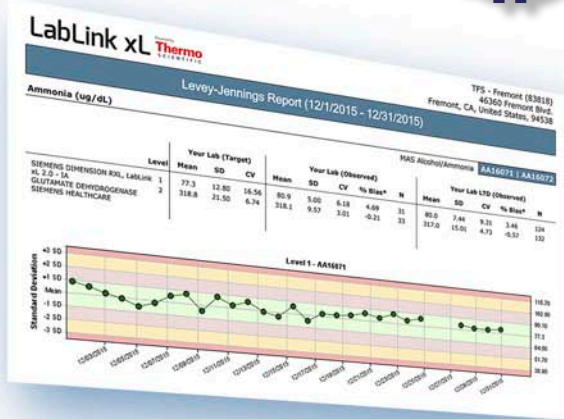
- Test-by-test listing of your lab's statistics and your peer group's statistics for a given month.
- Total Error Graph compares your lab's method to your peer group's mean and your chosen total allowable error limits.



## Monthly Summary Report

- Shows a histogram of your lab's data alongside your peer group's data.
- Quickly identify shifts and trends with a month-by-month snapshot of your lab's performance.

# Popular reports



## Levey-Jennings Report

- Displays individual daily QC results or the daily mean for a selected date range on a Levey-Jennings chart.
- View Levey-Jennings charts for a single level or multiple levels at the same time for quick comparison.

**LabLink xL Thermo**  
Statistical Summary Report (Dec 2015)  
Lab 4: USA (83018)  
46360 Fremont Blvd.  
Fremont, CA, United States, 94538

MAS Alkaline Phosphatase

Test	Mean	SD	CV	SDI	CVI	% Bias
ALP (U/L)	100.0	10.0	10.0	0.0	0.0	0.0
ALP (U/L)	100.0	10.0	10.0	0.0	0.0	0.0

## Statistical Summary Report

- Displays a statistical analysis for each of your lab's tests alongside your peer group's results for a given month.
- View performance metrics such as Mean, SD, CV, SDI, CVI and % Bias all on one screen.

**LabLink xL Thermo**  
Exception Notes Report (Dec 2015)  
Lab 4: USA (83018)  
46360 Fremont Blvd.  
Fremont, CA, United States, 94538

MAS CardioImmune XL

Test	Lot	Value	Flag	Date & Time	LYS Mean	Run Date
Myoglobin (ng/mL)	CXL17023	144.500	G	12/1/2015 12:12 PM	328.187	12/1/2015
Myoglobin (ng/mL)	CXL17023	144.500	P	12/2/2015 12:12 PM	328.187	12/2/2015
Troponin T (ng/mL)	CXL17022	0.314	P	12/2/2015 12:12 PM	0.351	12/2/2015
Troponin T (ng/mL)	CXL17022	0.314	P	12/3/2015 12:12 PM	0.351	12/3/2015
Troponin T (ng/mL)	CXL17022	0.314	P	12/4/2015 12:12 PM	0.351	12/4/2015
Troponin T (ng/mL)	CXL17022	0.315	P	12/5/2015 12:12 PM	0.351	12/5/2015
Troponin T (ng/mL)	CXL17022	0.315	P	12/6/2015 12:12 PM	0.351	12/6/2015
Troponin T (ng/mL)	CXL17022	0.315	P	12/7/2015 12:12 PM	0.351	12/7/2015
Troponin T (ng/mL)	CXL17022	0.315	P	12/8/2015 12:12 PM	0.351	12/8/2015
Troponin T (ng/mL)	CXL17022	0.315	P	12/9/2015 12:12 PM	0.351	12/9/2015
Troponin T (ng/mL)	CXL17022	0.315	P	12/10/2015 12:12 PM	0.351	12/10/2015
Troponin T (ng/mL)	CXL17022	0.315	P	12/11/2015 12:12 PM	0.351	12/11/2015
Troponin T (ng/mL)	CXL17022	0.315	P	12/12/2015 12:12 PM	0.351	12/12/2015
Troponin T (ng/mL)	CXL17022	0.315	P	12/13/2015 12:12 PM	0.351	12/13/2015
Troponin T (ng/mL)	CXL17022	0.315	P	12/14/2015 12:12 PM	0.351	12/14/2015
Troponin T (ng/mL)	CXL17022	0.315	P	12/15/2015 12:12 PM	0.351	12/15/2015
Troponin T (ng/mL)	CXL17022	0.315	P	12/16/2015 12:12 PM	0.351	12/16/2015
Troponin T (ng/mL)	CXL17022	0.315	P	12/17/2015 12:12 PM	0.351	12/17/2015
Troponin T (ng/mL)	CXL17022	0.315	P	12/18/2015 12:12 PM	0.351	12/18/2015
Troponin T (ng/mL)	CXL17022	0.315	P	12/19/2015 12:12 PM	0.351	12/19/2015
Troponin T (ng/mL)	CXL17022	0.315	P	12/20/2015 12:12 PM	0.351	12/20/2015
Troponin T (ng/mL)	CXL17022	0.315	P	12/21/2015 12:12 PM	0.351	12/21/2015
Troponin T (ng/mL)	CXL17022	0.315	P	12/22/2015 12:12 PM	0.351	12/22/2015
Troponin T (ng/mL)	CXL17022	0.315	P	12/23/2015 12:12 PM	0.351	12/23/2015
Troponin T (ng/mL)	CXL17022	0.315	P	12/24/2015 12:12 PM	0.351	12/24/2015
Troponin T (ng/mL)	CXL17022	0.315	P	12/25/2015 12:12 PM	0.351	12/25/2015
Troponin T (ng/mL)	CXL17022	0.315	P	12/26/2015 12:12 PM	0.351	12/26/2015
Troponin T (ng/mL)	CXL17022	0.315	P	12/27/2015 12:12 PM	0.351	12/27/2015
Troponin T (ng/mL)	CXL17022	0.315	P	12/28/2015 12:12 PM	0.351	12/28/2015
Troponin T (ng/mL)	CXL17022	0.315	P	12/29/2015 12:12 PM	0.351	12/29/2015
Troponin T (ng/mL)	CXL17022	0.315	P	12/30/2015 12:12 PM	0.351	12/30/2015

## Exception Notes Report

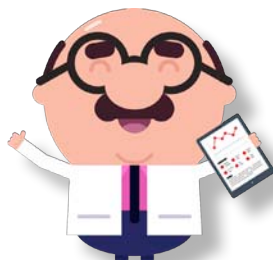
- Summarizes which QC results and corresponding analytical methods fell outside the performance criteria in a given month.
- Designated values are flagged as outliers with respect to the lab's mean, peer group mean, total allowable error, or other limits for each test.



# Automate your QC data transfer

## eliminate manual submission

Automatically send QC data from Data Innovations Instrument Manager, Beckman Remisol Advance Data Manager, and Cobas MPL without the need to manually upload a text file or PDF. Eliminate transcription errors, say goodbye to submission cutoff dates, and access your data in real-time. Since every lab is different, contact your local sales representative to find out which of our auto-connectivity solutions is right for you.



### Bi-Directional Feedback with Data Innovations Instrument Manager

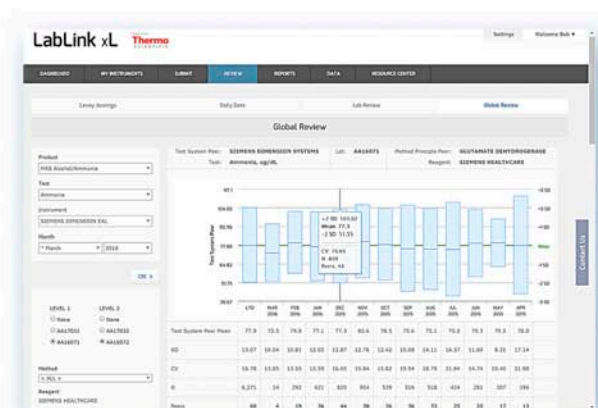
Use LabLink xL together with Instrument Manager to receive alerts and hold tests if a QC warning is triggered.

- Text Message
- Email
- Pop-Up Alert
- Lightpole Alert

## Visualize your results in real time



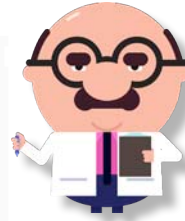
Levey-Jennings Instrument Comparison



Global Peer Review

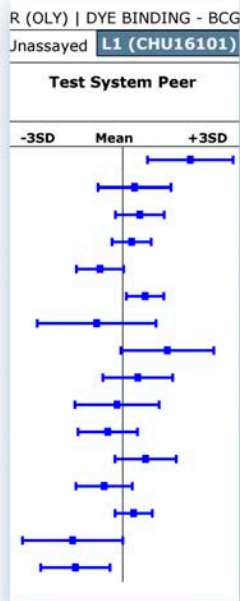


## scalable software grows with your organization



**View data from a specific lab, or all your labs combined.**

**Compare results within your affiliated network.**



- **Permissions hierarchy with multiple levels of user access**
  - **Elite User:** For administrators who need full access to data across all labs.
  - **Intermediate User:** For Lab managers who need to review data and sign reports.
  - **Basic User:** For technologists who need to submit data.



## Affiliated Lab Report

- **Easily compare monthly results for test/instrument systems across all your affiliated labs**
- **View performance metrics for all instruments throughout your affiliated network**



## Affiliated Exception Notes Report

- Summarizes which QC results and corresponding analytical methods fell outside the performance criteria in a given month for all your affiliated labs.
- Values are flagged as outliers with respect to the peer group mean, total allowable error, each lab's mean, or other limits for each test.

# Stay up-to-date with Resource Center



## LabLink xL Resource Center



- View the latest package inserts, supplements, MSDS, and Certificates of Analysis for MAS products
- Receive product updates and important notifications via email
- Download additional documents such as User Guide and QC handling guidelines

# Frequently Asked Questions

**Q: Is LabLink xL secure?**

**A: Absolutely. LabLink xL uses SSL encryption to ensure your data is protected.**

**Q: Can I create unique login credentials for each user?**

**A: Yes. Each user can have a unique login ID and password, and the lab administrator can set different levels of permission for each user. For example, an administrative user can sign reports while a lab technician can only view and enter data.**

**Q: I have non-MAS products. Do I need to use other software?**

**A: Non-MAS products are supported by auto-connectivity and Daily QC features such as report generation, Levey-Jennings charts, Westgard rules, multiple lab management, and affiliated lab review. Peer data for non-MAS products is not available at this time.**

**Q: Does LabLink xL offer both manual and automated data entry options?**

**A: Yes. LabLink xL offers options for automated data entry as well as manual data entry (individual points or summary data).**

**Q: Does LabLink xL have access to my patient data?**

**A: No. Even with our automated connectivity options, patient data never leaves your lab, and is never seen by LabLink xL.**



## Interested in learning more?

Our specialists can provide a software demonstration, go over auto-connectivity options, and more.

Visit [maslablink.com](http://maslablink.com) or email us at [lablink.qap@thermofisher.com](mailto:lablink.qap@thermofisher.com)

For more information please contact your local sales representative.

Visit [maslablink.com](http://maslablink.com) to view an online LabLink xL demo.

[thermofisher.com/qc](http://thermofisher.com/qc)

© 2016 Thermo Fisher Scientific Inc. All rights reserved. Copyrights in and to portions of the illustrations are owned by a third party and licensed for limited use only to Thermo Fisher Scientific by Shutterstock. Instrument Manager is a trademark of Data Innovations. All other trademarks are the property of Thermo Fisher Scientific and its subsidiaries. Non Thermo Fisher Scientific product names, logos, and brands are property of their respective owners. All company, product and service names are for identification purposes only. Use of these names, logos, and brands does not imply endorsement.

#### Diagnostics

##### USA

46500 Kato Road  
Fremont, CA 94538 USA  
Tel. 800-232-3342 / + 1 510-979-5000  
[sales.diagnostics.fmt@thermofisher.com](mailto:sales.diagnostics.fmt@thermofisher.com)

##### Asia Pacific

Fax: +65 6896 2147  
[cdx.asia.info2@thermofisher.com](mailto:cdx.asia.info2@thermofisher.com)

##### Australia

Tel. + 61 1800 333 110  
[auinfo@thermofisher.com](mailto:auinfo@thermofisher.com)

##### Belgium Netherlands & Luxembourg

Tel. + 31 76 579 5555  
[Info.benelux.cdd@thermofisher.com](mailto:Info.benelux.cdd@thermofisher.com)

##### Canada

Tel. 905-286-4290  
[CDD.Canada@thermofisher.com](mailto:CDD.Canada@thermofisher.com)

##### China

Tel. + 86 800 810 5118  
[sales.china@thermofisher.com](mailto:sales.china@thermofisher.com)

##### France

Tel. + 33 (0) 1 40 86 65 00  
[cdx.fr.info@thermofisher.com](mailto:cdx.fr.info@thermofisher.com)

##### Germany

Tel. + 49 (0) 851 886 890  
[cdx.de.info@thermofisher.com](mailto:cdx.de.info@thermofisher.com)

##### Hong Kong

Tel. + 852 28854613  
[sales.hk@thermofisher.com](mailto:sales.hk@thermofisher.com)

##### Japan

Tel. + 81 (0)120-147-075  
[JPYOK-CDD.QC@thermofisher.com](mailto:JPYOK-CDD.QC@thermofisher.com)

##### New Zealand

Tel. + 61 0800933 966  
[nzinfo@thermofisher.co.nz](mailto:nzinfo@thermofisher.co.nz)

##### Nordic

Tel. + 46 8 594 691 30  
[info.nordic.cdd@thermofisher.com](mailto:info.nordic.cdd@thermofisher.com)

##### Russia

Tel. + 7 495 739 76 41  
[info.btd.moscow@thermofisher.com](mailto:info.btd.moscow@thermofisher.com)

##### Spain, Portugal & Italy

Tel. + 34 93589 8338  
[cdx.es.info@thermofisher.com](mailto:cdx.es.info@thermofisher.com)

##### Switzerland & Austria

Tel. + 41 26 663 86 70  
[cdx.ch.info@thermofisher.com](mailto:cdx.ch.info@thermofisher.com)

##### United Kingdom & Ireland

Tel. + 44 1442 868 940  
[cdx.UK.info@thermofisher.com](mailto:cdx.UK.info@thermofisher.com)

##### For Countries Not Listed

[distributor.cdd@thermofisher.com](mailto:distributor.cdd@thermofisher.com)

**Thermo**  
S C I E N T I F I C

A Thermo Fisher Scientific Brand